

A roasted lamb leg is the central focus, resting on a dark, textured platter. The lamb is golden-brown with a slightly charred exterior, garnished with fresh rosemary sprigs and a coating of mustard seeds. To the left of the lamb, several more rosemary sprigs are laid out. In the top left corner, a small metal bowl contains pink Himalayan salt. To the right, a large, rustic knife with a dark handle and a metal blade is partially visible. The background is a dark, textured surface, possibly a wooden table or a dark backdrop.

# WINTER CATALOGUE 2024

MAKE IT WITH

# MBL

# MEET THE TEAM

With over 350 years of industry experience combined, the MBL Sales Team is stacked full of people with extensive knowledge in the meat processing, butchery, bakery, supermarket, and food service industries.

Whether machinery, packaging, ingredients or custom blending, our team can help with any of your food industry needs.

To solve any problem or innovate any idea, give our friendly sales team a call on 1800 626 649.



**Shane Reynolds**

Sales Representative



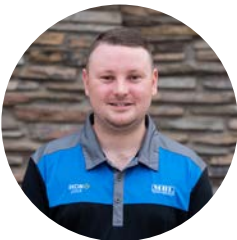
**Chris Rowe**

Sales Representative



**Alwyn Halls**

Sales Representative



**Benjamin Oerlemans**

Sales Representative



**Dale Rowe**

Key Account Manager



**Shane Harrison**

Business Development  
Manager (Blending)



**Cameron  
Mansueto**

Machinery Sales and  
Service



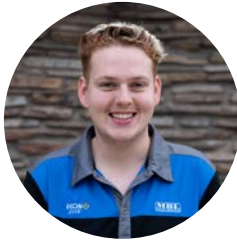
**Susie  
O'Brien**

Merchandise Sales  
Supervisor



**Tayla  
Meaney**

Merchandise Sales



**Edward  
Selby-Fullgrabe**

Merchandise Sales



**Mackenzie  
Beames**

Sales and Marketing  
Administrator



**Ryan  
Mercier**

Machinery and Retail  
Manager



**Kane  
Paus**

General Manager - Sales  
and Marketing



**Jamie  
Higgins**

Chief Executive Officer



# **CONTENTS**

<b>WIN A WEBER GRILL ACADEMY DOUBLE PASS</b>	<b>6</b>
<b>WINTER ESSENTIALS</b>	<b>7</b>
<b>MARINADES, SPRINKLES &amp; SEASONINGS</b>	<b>8</b>
<b>NEED TO INCREASE EFFICIENCIES?</b>	<b>10</b>
<b>BATTER</b>	<b>11</b>
<b>CRUMBS</b>	
<b>GOURMET GRANNY'S GRAVIES</b>	<b>13</b>
<b>TRAMONTINA KNIVES</b>	<b>14</b>
<b>SALAMI SEASON</b>	<b>16</b>
<b>NETTING</b>	<b>18</b>
<b>TWINE</b>	
<b>CURES</b>	<b>20</b>
<b>SALTS</b>	
<b>CULTURES</b>	<b>21</b>
<b>HERBS &amp; SPICES</b>	<b>22</b>
<b>CASINGS</b>	<b>23</b>
<b>SAUSAGE &amp; BURGER MEALS</b>	<b>24</b>
<b>HOME COMPOSTABLE PACKAGING</b>	<b>26</b>
<b>2024 PACKAGING BANS</b>	<b>28</b>
<b>PACKAGING LEGISLATION</b>	<b>29</b>
<b>WINTER SPECIALS</b>	<b>30</b>

# WIN

## 1 OF 2 DOUBLE PASSES

### WEBER GRILL ACADEMY EXPERIENCE VALUED AT \$398 EACH

**SIMPLY SPEND \$1,500 ON AN INVOICE TO GET AN ENTRY FOR YOUR  
CHANCE TO WIN!**

**TREAT YOURSELF TO A FAMED WEBER EXPERIENCE**

**ENTRIES OPEN MONDAY, MAY 13TH, 2024  
ENTRIES CLOSE FRIDAY, JUNE 28TH, 2024  
WINNERS DRAWN MONDAY, JULY 8TH, 2024**



#### TERMS AND CONDITIONS

Every \$1,500, excluding GST, spent in a single order placed with MBL between May 13 and June 28, 2024 inclusive receives one entry into the random draw to win one of two Weber Grill Academy Experience Double Pass. Freight charges and credits are not valid to go towards total order.

Winners must have a valid trade account with MBL which must be in terms. Giveaway only open to retail account holders. Cash account customers, food processors, and wholesalers are not included.

Winners will be drawn on July 8, 2024, and the winning customers will be contacted by their account manager.

The draw is final and no correspondence will be entered into. By entering the draw, winners agree to their name and photos being taken for publicity purposes which may be displayed online, on social media and in various printed publications.

# WINTER ESSENTIALS

A high-angle, close-up photograph of a whole roasted chicken in a dark, rustic metal pan. The chicken is golden-brown and glistening, with a sprig of fresh thyme resting on its back. The pan sits on a dark wooden surface, with some dried herbs and a slice of orange visible in the background.

A WINTER  
MUST-HAVE!  
**MAGGI RICH  
GRAVY**

SOLD IN 6 PACKS OF 2kgs  
542342

# MARINADES, SPRINKLES & SEASONINGS

## THE BUTCHER'S BEST

543231	LEMON 2kg	540989	HOISIN 2kg
544213	MONGOLIAN LAMB 2kg	547679	THAI GF 2kg
545079	BBQ SPARE RIB 2kg	549055	THAI GF 10kg
546085	BBQ SPARE RIB 10kg	547661	TANDOORI 2kg
545095	BBQ SPARE RIB 15kg	548057	TANDOORI 10kg
542441	BBQ SPARE RIB GF 8kg	547596	YIROS 2kg
542458	BBQ SPARE RIB GF 20kg	545111	YIROS 15kg
540591	BBQ PLUM 2kg	547422	ALL SEASON 2kg
542886	BBQ PLUM 8kg	547737	ALL SEASON 10kg
543314	SWEET & SOUR 2kg	544413	BUFFALO WING GLAZE 2kg
546101	SWEET & SOUR 10kg	547703	FRENCH ONION GF 2kg
544155	HONEY SOY GF 2kg	547653	ROSEMARY & MINT 2kg
546440	HONEY SOY GF 10kg	541235	PERI PERI 10kg
544403	HONEY SOY GF 20kg	540229	TOMATO & GARLIC 2kg
540369	SATAY (NO PEANUT) 2kg	541433	MINT FLAVOURED 2kg
540377	SATAY (NO PEANUT) 10kg	541276	CHEESE & CHIVES 2kg
543124	APRICOT GLAZE 2kg	540146	RED, WINE & GARLIC 2kg
548651	EXOTIC GRILL 2kg	548388	HK GARLIC STEAK 2.5kg
540138	EXOTIC GRILL 10kg	548354	HK PEPPER STEAK 2.5kg
547638	HERB, GARLIC & CHILLI 2kg	547398	MBL PEPPER STEAK 1.5kg
549022	HERB, GARLIC & CHILLI 10kg	547414	MBL GARLIC STEAK 1.5kg
547380	LAMB SPRINKLE 1.5kg	547406	MBL LEMON PEPPER 1.5kg

OUR DELICIOUS  
**PORCHETTA**  
**RUB**

IS PERFECT FOR A  
**PORK ROAST!**

250790 1kg





## FLAVOUR MAKERS

250010	PEANUT SATAY GF 2.5kg
250119	NO PEANUT SATAY GF 2.5kg
250150	MACADAMIA SATAY GF 2.5kg
250366	MALAY SATAY GF 2.5kg
250036	YAKITORI PEPPER GF 2.5kg
250101	LEMON PEPPER GF 2.5kg
250085	HONEY PEPPER GF 2.5kg
250069	ASIAN STICKY LIME GF 2.5kg
250143	THAI LEMONGRASS & COCONUT SPRINKLE GF 2.5kg
250135	TAMARIND, LIME & CHILLI GF 2.5kg
250565	PORTWINE & GARLIC GF 2.5kg
250557	MANGO CURRY GF 2.5kg
250077	MEMPHIS BBQ RUB GF 2.5kg
250424	LOUISIANA BBQ RUB GF 2.5kg
250325	BBQ SPARE RIB GF 2.5kg
250002	BBQ PLUM GF 2.5kg
250051	KOREAN BBQ GF 2.5kg
250005	SWEET & SOUR GF 2.5kg
250028	PERI PERI GF 2.5kg
250044	APRICOT FRENCH ONION GF 2.5kg
250093	BLACK BEAN GF 2.5kg
250127	THAI CHILLI GF 2.5kg
250333	BUFFALO GF 2.5kg
250341	HONEY SOY GF 2.5kg
250358	LEMON OREGANO GF 2.5kg
250374	MOROCCAN GF 2.5kg
250382	PEKING GF 2.5kg
250390	TANDOORI YOGHURT GF 2.5kg
250408	TERIYAKI GF 2.5kg
250416	TOMATO & BASIL GF 2.5kg
250507	ROSEMARY & MINT GF 2.5kg
250515	GARLIC & BLACK PEPPER GF 2.5kg
250573	HERB, GARLIC & CHILLI GF 2.5kg
250440	SOUVLAKI SPRINKLE GF 2.5kg
250762	BLOOD ORANGE GLAZE GF 2.5kg



**NEW!**

## MAPLE ESPRESSO

**2kg 544412**

Our delicious NEW marinade is perfect on ribs and wings with its combination of heat, sweetness, and coffee kick!

# STRUGGLING WITH STAFF?

Reduce your reliance on staff by automating your schnitzel manufacturing process to save time and money.

Increase your yield to be able to double your starting weight with a continuous In-Line Tenderiser that feeds directly into a Gaser 240 Crumbling Line.

Produce consistent product every time, in time.



## Gaser 240 Crumbling Line

**682008**

Our crumbling lines now allow you to use high-yield batter with the Gaser 240, through an optional waterfall attachment.

## In-Line Tenderiser

**722062**

As an additional feature, you can a flattener for chicken breasts or use the tenderiser for stir fry strips.



# BATTER

341689	TEMPURA BATTER 15kg	341223	BATTER HIGH YIELD GF 10kg
340944	PRECOATING MIX 3kg	349381	BATTER HIGH YIELD 15kg
341671	PRECOATING MIX 15kg	341401	BATTER SUPREME 12.5kg

# CRUMBS

191338	PRE-CRUMB 10kg	190869	FINE ORANGE PANKO 15kg
191666	FINE WHITE 15kg	191502	COARSE ORANGE PANKO 10kg
191707	MEDIUM WHITE 15kg	191617	FINE GLUTEN FREE 15kg
191715	COARSE WHITE 10kg	191559	MEDIUM GLUTEN FREE 12kg
191767	MEDIUM CATERERS 10kg	191163	FRENCH ONION 5kg
190843	MEDIUM CATERERS 15kg	190447	LEMON 10kg
190553	COARSE CATERERS 10kg	190934	SWEET CHILLI 10kg
191023	MEDIUM VERSY 10kg	190942	HOT & SPICY 10kg
191567	COARSE VERSY 10kg	191723	SOUTHERN CHICKEN 10kg
190363	WHITE PANKO 10kg	191731	TUSCAN HERB & GARLIC 10kg
191526	YELLOW PANKO 10kg	190744	CHICKEN STYLE 15kg
		190751	PARMAGIANA 15kg



**THEY'RE BACK!**  
**KENTUCKY**  
**CRUMBS**  
**A DELICIOUS GOLDEN**  
**CRUNCH!**  
191733 10kg



# GOURMET GRANNY'S DRY MIX GRAVIES & SAUCES

- 485983 RICH ROAST GRAVY (15 x 25g)
- 485975 CHICKEN GRAVY (15 x 25g)
- 485967 ONION GRAVY 15 x 32g)
- 486279 ROSEMARY & LAMB (12 x 45g)
- 485934 PEPPER SAUCE (12 x 44g)
- 486185 MUSHROOM SAUCE (12 x 42g)
- 485939 DIANE SAUCE (12 x 45g)
- 486186 CREAMY GARLIC (12 x 40g)
- 485926 CHEESE SAUCE (12 x 40g)
- 485942 BEEF STROGANOFF (12 x 42g)
- 485959 BEEF CASSEROLE (12 x 44g)

**GRAB THEM  
NOW!**

# LIQUID GRAVIES & SAUCES

- PACKS OF 6 X 200g
- 486285 RICH ROAST GRAVY
- 486283 CREAMY PEPPER
- 486284 CREAMY MUSHROOM
- 486282 DIANE SAUCE
- 486281 RED WINE & GARLIC JUS

**NEW!**

Gourmet Granny's NEW liquid gravies & sauces are ready to heat & serve in 60 seconds, making dinner time a breeze.





# TRAMONTINA

## Black Collection

- 22840106 6" Boning Knife
- 22845107 7" Cleaver
- 22843108 8" Meat Knife
- 22841110 10" Butcher Knife
- 22842112 12" Ham Knife
- 22844110 10" Meat Knife
- 22848110 10" Serrated Slicer
- 26592100 Heavy Duty Spatula
- 26593100 Heavy Duty Meat Tong
- 26594100 Heavy Duty Grill Brush
- 22846100 Stainless Steel BBQ Claw
- 22847100 2PC Polypropylene BBQ Claws
- 26495000 Carbon Steel Grill
- 25058100 Antimicrobial Cutting Board
- 22999045 5PC Knife Block

## Low & Slow

- 38020306 Low & Slow 6" Boning Knife
- 38021310 Low & Slow 10" Sharpener
- 38023310 Low & Slow 10" Carving Knife
- 38025312 Low & Slow 12" Brisket Slicer
- 38599013 5PC Low & Slow Pouch

## Polywood

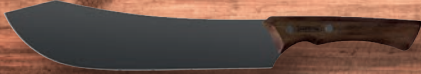
- 21116095 5" Jumbo Steak Knife - Brown
- 38202397 4PC Jumbo Steak Knife Set - Brown
- 38201391 6PC Jumbo Steak Knife Set - Brown
- 38265949 48PC Jumbo Steak Knives - Brown
- 21198914 3PC BBQ Carving Set
- 21198960 2PC Barbosa Carving Set
- 21198981 5PC Barbecue Set - Brown

## Accessories

- 26418065 Skewers - 65cm
- 26418075 Skewers - 75cm
- 26418095 Skewers - 95cm
- 26419075 Dual Prong Skewers
- 26499003 6PC Stainless Steel Skewers Set
- 13460351 FSC End Grain Chopping Board Teak

# TRAMONTINA

## THE RIGHT KNIFE MAKES ALL THE DIFFERENCE



### BLACK COLLECTION



**DARKENED STAINLESS STEEL BLACK**  
maintains colour due to alkaline submersion.



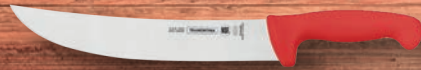
**RESISTANT AND ROBUST**  
against manufacturing defects.



**ANATOMIC HANDLE**  
made from Brazilian Ipe  
Hardwood.



**FSC CERTIFIED**  
handle is made with wood from  
well-managed forests.



### LOW & SLOW



**SUB-ZERO TEMPERED BLADES**  
precision, durability, long lasting  
sharpness, & a smooth cut.



**ANTIMICROBIAL**  
completely hygienic with no gap  
between blade & handle.



**DIN 1.4116 STAINLESS STEEL**  
blade of the highest quality with  
Injected Polypropylene handles.



**NSF CERTIFIED**  
approved by the National  
Sanitation Foundation.



### POLYWOOD



**DISHWASHER SAFE**  
knives are safe to use in the  
dishwasher.



**5 YEAR WARRANTY**  
against manufacturing defects.



**REFORESTED REAL WOOD**  
knives with reforested real  
polywood handles.



**IMPACT AND HEAT RESISTANT**  
enhanced durability designed for  
commercial use.

QUALITY PRODUCTS SINCE 1911



# SALAMI SEASON



## DON'T FORGET

- 261859 TWINE FINE COTTON  
660tex 780m
- 260206 TWINE FINE/MEDIUM  
COTTON 1320tex 380m
- 261842 TWINE MEDIUM COTTON  
1950tex 236m
- 382770 SPRING NET L5 18/70-125  
WHITE (50m)
- 370990 CLEAR FIBROUS CASING  
45x500mm (20/bdle)
- 370627 HAM BAG CASING 126x660mm  
(NO9) (25/bdle)
- 320697 KURITKWIK 2kg
- 533000 WHOLE BLACK PEPPER 1kg
- 534180 CRACKED BLACK  
PEPPER 10/16 1kg
- 534230 GRANULATED GARLIC 1kg
- 533059 SWEET PAPRIKA  
100ASTA 1kg
- 535997 FENNEL SEED 1kg
- 534586 CHILLI POWDER MEDIUM  
HEAT 1kg
- 535419 CHILLI CRUSHED MEDIUM  
HEAT 1kg





<b>NETTING</b>	382861	MERC NET 200 HL2 (50m)
	382895	MERC NET 180 HL 2 (50m)
	383257	MESH NET 24 WHITE (50m)
	383265	MESH NET 24 RED/WHITE (50m)
	383000	SMOKE NET 390 (25 PIECES)
	382812	SPRING NET L5 16/60-110 WHITE (50m)
	382770	SPRING NET L5 18/70-125 WHITE (50m)
	382614	SPRING NET L5 20/80-140 WHITE (50m)
	382606	SPRING NET L5 20/80-140 RED (50m)
	382622	SPRING NET L5 20/80-140 RWG (50m)
	382648	SPRING NET L5 22/90-160 WHITE (50m)
	382630	SPRING NET L5 22/90-160 RED (50m)
	382655	SPRING NET L5 22/90-160 RWG (50m)
	382671	SPRING NET L5 24/100-180 WHITE (50m)
	382663	SPRING NET L5 24/100-180 RED (50m)
	382689	SPRING NET L5 24/100-180 RWG (50m)
	382838	SPRING NET L5 26/110-200 WHITE (50m)
	382804	SPRING NET L5 28/120-220 WHITE (50m)
	383166	CHICKEN TRUSSES WHITE 65mm (2000)
	383331	CHICKEN TRUSSES RED 65mm (2000)
	383364	CHICKEN TRUSSES 4 COLOURS 65mm (4000)

---

<b>TWINE</b>	260646	BUTCHERS TWINE POLYESTER 1800tex 400m
	261446	BUTCHERS TWINE POLYESTER 2475tex 400m
	261610	TWINE POLYESTER BLUE & WHITE 560m
	261586	TWINE POLYESTER RED & WHITE 560m
	261859	TWINE FINE COTTON 660tex 780m
	260206	TWINE FINE/MEDIUM COTTON 1320tex 380m
	261842	TWINE MEDIUM COTTON 1950tex 236m
	260414	TWINE MEDIUM JUTE 1580tex 315m
	261875	TWINE JUTE 3500tex 140m 6-PACK

## HOW TO TIE A BUTCHERS KNOT

Scan the QR code for handy instructions on how to tie a butchers knot, so you can roll your roasts this winter!





PREMIUM CUT

GIESSER  
1980-30rd  
Hochdorf

**30% OFF**  
**GIESSER**  
**PREMIUM CUT**  
**KNIVES!**  
WHILE STOCKS LAST

## CURES

320697	KURITKWIK 2kg
324228	KURITKWIK 12kg
327254	FERMENTING SALT NO2 3kg
326595	FERMENTING SALT NO2 12kg
320408	PINEAPPLE CURE 525g
322040	HAM CURE 4.55kg
324707	HAM CURE 20kg
324962	HAM CURE 4x4 5kg
324939	HAM CURE 4x4 25kg
325795	TARI P27 25kg
326778	MAPLE FLAVOUR HAM CURE 6kg
326760	MAPLE FLAVOUR HAM CURE (4x6kg)
326786	DURANT CANADA CURE 2.69kg

---

## SALTS

330522	MEDIUM FLOSSY SALT 2kg
331819	SUPERFINE SALT 10kg
331785	IODISED SUPERFINE SALT 25kg
330480	FINE SALT 25kg
330514	MEDIUM FLOSSY SALT 25kg
330845	COARSE SALT 25kg



# CULTURES

In modern salami production, starter cultures are added to the meat mix in order to ensure reproducible lactic acid formation, thereby creating a safe and uniform product. The cultures consist typically of blends of lactic acid bacteria and *Staphylococcus* species.

**326447 T-SPX MEAT CULTURE 25g**  
Imparts a relatively mild acidification, good colour formation and stability with a round and mild flavour typical of South European salamis. Suitable for smoked or molded slow fermented sausages.

**326454 F1 MEAT CULTURE 25g**  
Similar features to T-SPX but faster in PH drop, suitable for shorter production times.

**327469 BACTOFERM 600 MEAT CULTURE 25g**  
Designed for surface mold inoculation for faster and more uniform mold coverage. Traditional white coverage for Southern European style sausages such as Italian salami and particularly recommended for sausages dried at low temperature and/or low humidity.

**327727 B-LC-007 MEAT CULTURE 50g**  
A combination of cultures, 007 is adaptable across a broad variety of salami styles, and has an additional strain specifically for protection against *Listeria monocytogenes*.





## HERBS & SPICES

533174	PIMENTO (ALLSPICE) 1kg
533075	NUTMEG GROUND 1kg
532903	CINNAMON GROUND 1kg
533125	CLOVES GROUND 1kg
532911	MACE GROUND 1kg
533133	GINGER GROUND 1kg
533075	NUTMEG GROUND 1kg
533380	MIXED SPICE GROUND 1kg
535690	CUMIN GROUND 1kg
533091	CORIANDER GROUND 1kg
537399	MIXED HERBS 500g
533877	PARSLEY 4mm 500g
534024	ROSEMARY GROUND 1kg
537472	ROSEMARY CUT 500g
533232	THYME GROUND 1kg
532895	THYME RUBBED 1kg
533190	SAGE GROUND 1kg
537498	SAGE RUBBED 500g
535757	CHIVE FLAKES 500g
534032	BASIL RUBBED 1kg
534396	OREGANO GROUND 1kg
537555	OREGANO RUBBED 1kg
533059	PAPRIKA SWEET 1kg
536136	PAPRIKA 120 ASTA 1kg
533067	BLACK PEPPER GROUND 1kg
534180	BLACK PEPPER CRACKED 10/16 1kg
533000	BLACK PEPPER WHOLE 1kg
533018	WHITE PEPPER GROUND 1kg
536326	GREEN PEPPERCORN 800g
533026	CAYENNE PEPPER 1kg
533455	CHILLI POWDER MILD HEAT 1kg
534586	CHILLI POWDER MEDIUM HEAT 1kg
535419	CHILLI CRUSHED MEDIUM HEAT 1kg
534230	GARLIC GRANULES 1kg
535591	FRESH CRUSHED GARLIC 1kg
535997	FENNEL SEED 1kg

# CASINGS

## NATURAL

363747	HOG CASING 28/30
363754	HOG CASING 28/30 TUBED (2bdle)
363796	HOG CASING 29/31 TUBED (2bdle)
363770	HOG CASING 32/35
363788	HOG CASING 35/38
363820	HOG CASING 35/38 (3bdle)
363721	HOG CASING 43 CACCIATORI 30m
363804	HOG CASING 42/44 TUBED (2bdle)
363291	SHEEP CASING 22/24 (2bdle)
363416	SHEEP CASING 22/24 TUBED
363374	SHEEP CASING 24/26 (2bdle)
363408	SHEEP CASING 24/26 TUBED
363382	SHEEP CASING 26+ (2bdle)
363598	SHEEP BUNG NO2 (10 pcs)
363739	OX MIDDLES 55/60 18m
363713	OX BUNGS 125mm+ (5 pcs)

---

## SYNTHETIC

370005	METTWURST 58x500mm (25)
379907	GARLIC METTWURST 58x500mm (25)
379850	FIBROUS 45x500mm W/TIE (25)
370593	CLEAR FIBROUS 43x500mm (50)
370990	CLEAR FIBROUS 45x500mm (20)
370619	CLEAR FIBROUS 55x500mm (50)
379417	CLEAR FIBROUS 58x500mm (20)
370684	CLEAR FIBROUS 75x500mm (25)
370601	COLLAGEN 43mm SHIRRED (30M)
370627	HAM BAG 126x660mm (NO9) (25)
379685	HAM BAG 165x700mm (NO12) (25)
370651	HAM BAG 180x700mm (NO14) (25)



# SAUSAGE & BURGER MEALS

## MBL CLASSICS

356437	SPECIAL GLUTEN FREE 2.5kg
356163	SPECIAL GLUTEN FREE 15kg
356445	MASTER MEAL 2.5kg
356034	MASTER MEAL 15kg
356452	TRADITIONAL COUNTRY STYLE 2.5kg
356123	TRADITIONAL COUNTRY STYLE 15kg
356387	OLD ENGLISH PORK 2.5kg
356066	OLD ENGLISH PORK 15kg
356403	COUNTRY STYLE POULTRY 2.5kg
356074	COUNTRY STYLE POULTRY 15kg
356395	AUSSIE LAMB & MINT 2.5kg
356058	AUSSIE LAMB & MINT 15kg
356411	HERB & GARLIC 2.5kg
356115	HERB & GARLIC 15kg

---

## FLAVOUR MAKERS

250176	APPLE, SAGE & ROSEMARY GF 1kg
250184	HONEY, MINT & ROSEMARY GF 1kg
250192	MERLOT & CRACKED PEPPER GF 1kg
250200	MALAY SATAY GF 1kg
250226	MOROCCAN GF 1kg
250234	TOMATO & CARAMELISED ONION GF 1kg
250242	SPINACH & PINE NUT GF 1kg
250259	MANUKA HONEY & HICKORY GF 1kg
250465	IRISH PORK GF 1kg
250473	MEXICAN JALAPENO GF 1kg
250481	LAMB KOFTA GF 1kg
250523	SWEET CHILLI MANGO GF 1kg
250531	THAI BASIL & CORIANDER GF 1kg
250549	TEXAN CHILLI GF 1kg
250615	SUNDRIED TOMATO GF 1kg





## BURGER PREMIXES

352633	MBL CHICKEN PATTIE MIX 7kg
356155	MBL CHICKEN PATTIE MIX 15kg
351973	MBL BURGER PREMIX 7kg
356107	MBL BURGER PREMIX 15kg
547000	MBL HAMBURGER SEASONING 3kg
545103	MBL HAMBURGER SEASONING 15kg
546291	MBL PORK BURGER SEASONING 15kg
250499	FM BEEF BURGER PREMIX GF 2.5kg
250275	FM GOURMET ANGUS BURGER PREMIX GF 2.5kg

---

## EASYPACKS

450304	DANISH SALAMI 1kg	452805	CACCIATORI COMBI 1kg
450510	FRANKFURTER COMBI 1kg	452862	PRESSWURST 1kg
450528	VIENNA 1kg	452870	POLISH COMBI 1kg
450601	CEVAPCICI 1kg	453076	STRASSBURG 1kg
452029	CABANA 1kg	453282	SALAMI PLUS 1kg
452037	FRANKFURT 1kg	453308	HOT SPANISH CHORIZO 1kg
452433	KRANSKY/RUSSIAN 1kg	453548	COOKED METTWURST 1kg
452797	HUNGARIAN 1kg	453647	COOKED PEPPERONI 1kg



# HOME COMPOSTABLE PACKAGING

## BAGS

058315	PRODUCE BAG
058323	STAR SEAL BAG
058358	SINGLET BAG 25um
188110	VAC POUCH 150x200mm
188128	VAC POUCH 175x240mm
188136	VAC POUCH 210x300mm
188144	VAC POUCH 260x350mm
188375	PAPER STAND-UP POUCH 250g
188359	PAPER STAND-UP POUCH 500g
188383	ZIP STAND-UP POUCH 250g
188367	ZIP STAND-UP POUCH 500g

## TRAYS

623462	ECO-CANE 6x5"
623355	ECO-CANE 8x5"
623363	ECO-CANE 8x7"
623371	ECO-CANE 11x5"
623389	ECO-CANE 11x9"
612069	SOAKER PAD 150x86mm



## ECO-CANE TAKE-AWAY

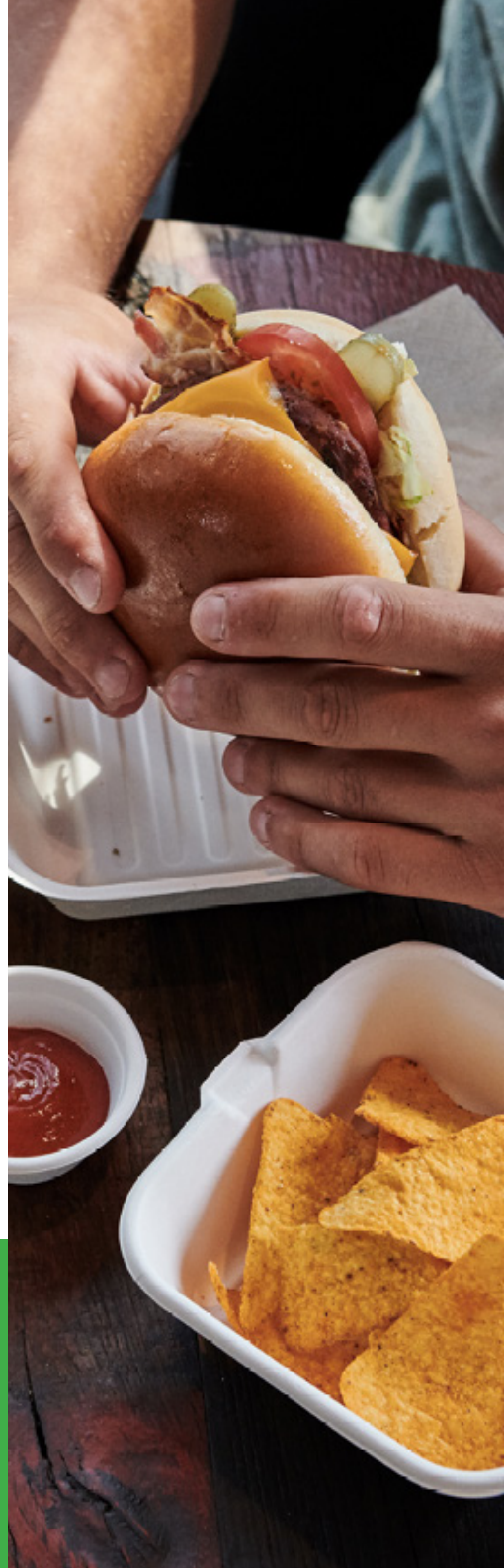
633593	PLATE 7" ROUND
633635	PLATE 10" ROUND 3COMP
633668	BURGER CLAM 6"
633783	BURGER CLAM 6" NATURAL
633650	SMALL SNACK CLAM
633676	MEDIUM SNACK CLAM
633726	LARGE SNACK CLAM
633734	LARGE SNACK CLAM 2COMP
633692	DINNER CLAM 8"
633700	DINNER CLAM 8" 3COMP
633718	X-LARGE DINNER CLAM 9"
633767	RECTANGLE BOWL 28oz
633742	RECTANGLE BOWL LID
633775	ROUND BOWL 30oz
633759	ROUND BOWL LID

## ECO-BOARD TAKE-AWAY

633460	TRAY NO1
633478	TRAY NO3
633486	TRAY NO4
633494	TRAY NO5
633551	HOT DOG BOX
633502	BURGER BOX
633510	JUMBO BURGER BOX
633528	REGULAR SNACK BOX
633536	LARGE SNACK BOX
633544	DINNER BOX
633569	FAMILY DINNER BOX

## HOME COMPOSTABILITY

Made from trees, plants, and compostable polymers, our eco products are 100% Home Compostable. Meaning they completely break-down leaving no damaging toxins or micro-materials in the earth. Simply put in a compost bin, worm farm, soil or Green Bin, to start the composting process.



## RECYCLABLE TRAYS

- 623314 LIQUID LOCK 8x5"
- 623322 LIQUID LOCK 8x7"
- 623330 LIQUID LOCK 11x5"
- 623348 LIQUID LOCK 11x9"
- 623421 LIQUID LOCK 13x10"
- 623414 LIQUID LOCK 14x11"

Made from recycled PET, our Liquid Lock trays are 100% kerbside recyclable. With their unique honeycomb design, the Liquid Lock trays lock excess liquids in place with no need for a soaker pad.

## 2024 PACKAGING BANS

With the planned packaging bans taking place in September 2024, now is the time to make the switch to our sustainable alternatives. Come and see us today!



# PACKAGING LEGISLATION

On September 9, 2020, the South Australian Parliament passed the Single-use and Other Plastic Products (Waste Avoidance) Act 2020. This legislation is the first of its kind in Australia and a positive step towards avoiding waste. South Australia intends to continue its leadership in phasing out unnecessary single-use and other problematic plastic products over the next few years.

## WHY?

It is recognised around the world that phasing out single-use plastics is an important and achievable step in striving to reduce pollution, cut carbon emissions and protect marine life. Without action, the annual flow of plastic into the ocean alone will nearly triple by 2040 to 29 million metric tonnes per year, the equivalent of 50 kilograms of plastic for every metre of coastline worldwide.

South Australia has taken steps to address the impacts associated with a range of single-use and other plastic products and was the first jurisdiction in Australia to do so on a state-wide basis. Other states and territories have since followed South Australia's lead.

## BANNED ITEMS

### 2021

Single-use plastic beverage stirrers, single-use plastic cutlery, and single-use plastic drinking straws.

### 2022

Expanded polystyrene cups, bowls, plates and clamshell containers; and oxo-degradable plastic products.

### 2023

Single-use plastic bowls and plates, plastic-stemmed cotton buds, and plastic pizza savers.

## PLANNED BANNED ITEMS

### SEPTEMBER 1, 2024

Plastic barrier bags, thick plastic carry bags, expanded polystyrene consumer food and beverage containers (including meat trays), plastic confetti and plastic balloon sticks/ties, plastic bread tags, single-use beverage containers (including coffee cups), and single-use plastic food containers.

### SEPTEMBER 1, 2025

Plastic fruit stickers, plastic soy sauce fish, and pre-packaged and attached products.

Find more information here: <https://www.replacethewaste.sa.gov.au/>

# WINTER SPECIALS

CODE	DESCRIPTION	UNIT	PRICE*
544412	MAPLE ESPRESSO GLAZE 2kg	BAG	\$19.95
544413	BUFFALO WING GLAZE 2kg	BAG	\$14.50
058358	HOME COMPOSTABLE SINGLET BAG 25um	CTN	\$45.00
191733	KENTUCKY CRUMB 10KG	BAG	\$59.95
623637	TRANSLUCENT CPET TRAY 325x265x51 (90)	CTN	\$80.00
623678	TRANSLUCENT CPET TRAY 225x175x43 2P (350)	CTN	\$110.00
623652	TRANSLUCENT CPET TRAY 225x175x34 (350)	CTN	\$110.00
623660	TRANSLUCENT CPET TRAY 225x175x43 (350)	CTN	\$100.00
623389	ECO CANE TRAY 11x9" (500)	CTN	\$100.00
633775	ROUND ECO-CANE BOWL 30oz (250)	CTN	\$40.00
632722	HINGED LID ROUND CONTAINER 50ml (1000)	CTN	\$50.00

Specials run from the 1st of June, 2024 to the 31st of August, 2024, or while stocks last.

\* Prices excludes GST and are subject to change.



MAKE IT WITH

# MBL



**For pricing or more information, contact your sales rep today.**

**Or call our sales team on 1800 626 649.**

**MBL, 203-215 Hanson Road, Athol Park SA 5012**

**[www.makeitwithmbl.com.au](http://www.makeitwithmbl.com.au)**